

# AirLive Cloud-Based Controller

AirCloud



Cloud  
Captive Portal

Dash  
Board

Live Status  
Monitor

Device  
Alarm Notify

Android  
App

Ap  
Configure

AP Template  
Deploy

Import  
Export  
Auth User

Muti SSID  
Configure

Wifi time  
Schedule

## AirCloud Overview

AirCloud is a cloud-based wireless controller software developed by AirLive, specifically designed for managing AirLive new range of wireless access points, including ceiling, in-wall, and outdoor models, as well as hardware wireless controller.

AirCloud offers a centralized platform for administrators to manage and monitor multiple wireless access points from a single location, without the need for on-premises hardware or software. The AirCloud can be accessed from anywhere with an internet connection, making it ideal for remote management of distributed networks.

It is a powerful tool for managing and monitoring wireless networks, particularly for organizations with locations or distributed workforces. The solution can be applied for smart wireless city, large scale campus, hotel & shopping mall.

## Key function of AirCloud

**Centralized management:** AirCloud provides a centralized platform for managing and monitoring multiple wireless access points from a single location, simplifying network management and reducing the need for specialized IT staff.

**Automated configuration:** The software offers automated configuration of multiple wireless access points, reducing the time and effort required to set up and deploy new devices.

**Network monitoring:** AirCloud provides real-time monitoring of network performance, including traffic analysis and device health status, allowing administrators to quickly identify and troubleshoot issues.

**Guest access:** The software offers a guest access portal that can be customized with a company logo and messaging, providing a professional and secure experience for guests accessing the network.

**Security features:** AirCloud offers a range of security features, including advanced encryption protocols, firewall protection, and rogue access point detection.

## Highlight Feature

- Fully residing within the cloud
- Cloud Captive portal
- Import and Export Authentication Users.
- Device Template create and cloud deploy
- Supports efficient deployment and reduces the overall cost of deployment, operation, and maintenance
- Centralized management for unlimited AirLive WLAN Controller, Ceiling access points, Inwall access point, and outdoor CPE, more products coming up
- The AirCloud Android APP for convenient management
- The easy-to-use dashboard makes it easy to see your real-time network status and check network usage and traffic distribution.

## AirCloud Major Function Introduction

The AirCloud provides easy-of-use function for end-client to monitor and manage as well as troubleshoot network problem cost-effectively. The strong function include real-time monitoring via a user-friendly cloud-based dashboard, Cloud Captive Portal for access authentication control, Auto Network Topology View to efficiently identify network problems and troubleshoot, Auto multiple Cloud AP Configure and deploy via pre-configured templates, and more.

## Real-time Live Status Monitor and Alarm notification via user-friendly Cloud Dash Board

The cloud-based dashboard can provide real-time monitoring of device traffic, helping end clients troubleshoot network congestion. The alarm notification feature can warn end clients when a device experiences heavy CPU or memory loading or DHCP conflicts, allowing them to take prompt action and minimize the risk of prolonged downtime or data loss. It can also assist end clients in making informed decisions about their network systems' performance and stability.

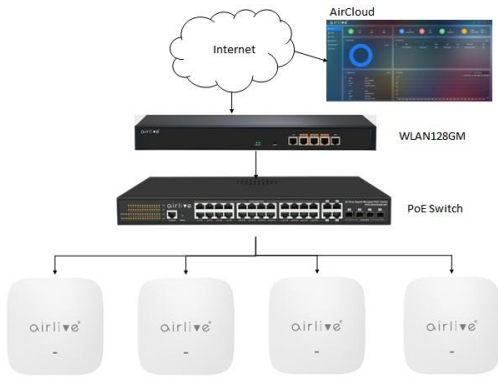
Overall, the cloud-based dashboard with live status monitoring and alarm notification can enhance network management and help end clients ensure the smooth operation of their devices and systems.



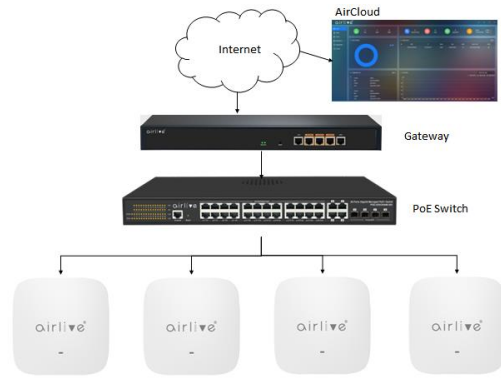
Cloud Dash Board for Real-time Live Status Monitor and Alarm notification

### Powerful Tool for Large Scale Wireless deployment and Application

The AirLive cloud-based software controller, AirCloud, can manage a series of Access Point, Hardware Controller, and outdoor CPE as well as more products coming up. The solution can be applied for wireless city, large scale campus, hotel & shopping mall.



AirCloud With Hardware Controller and Access point



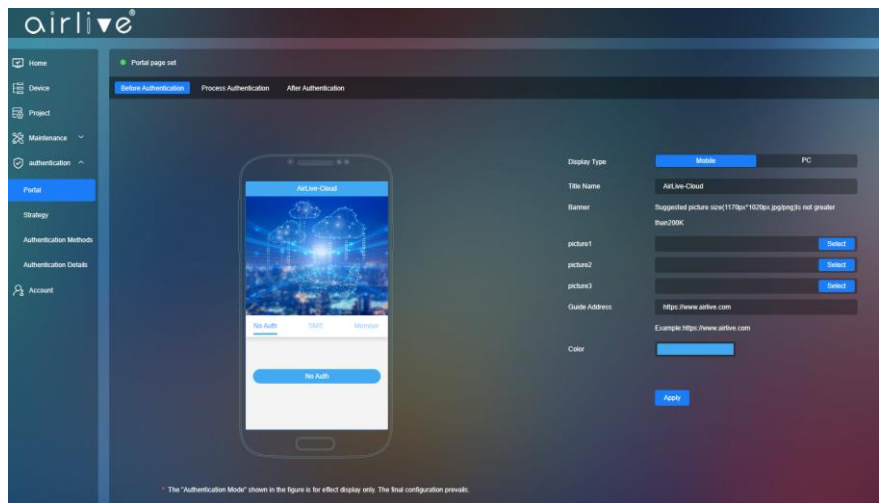
AirCloud With access point

### Cloud Captive Portal Access Authentication Security

The AirCloud supports “Cloud Captive Portal” with web-based login page to authenticate users and control access to public network or Wi-Fi hotspot.

When users attempt to access the public network or Wi-Fi hotspot, they are redirected to the cloud captive portal login page, where they are required to enter their credentials or accept the terms and conditions of use. Once authenticated, users can access the network and are usually directed to a landing page or other specified destination.

Cloud Captive Portals can offer several benefits for businesses or organizations that provide public Wi-Fi access. They can help ensure that only authorized users can access the network, provide data usage statistics and analytics, and even offer advertising or promotional opportunities through the landing page. Additionally, cloud captive portals can allow for easy customization and management of the login page, making it simple to update branding, terms of use, or other information.



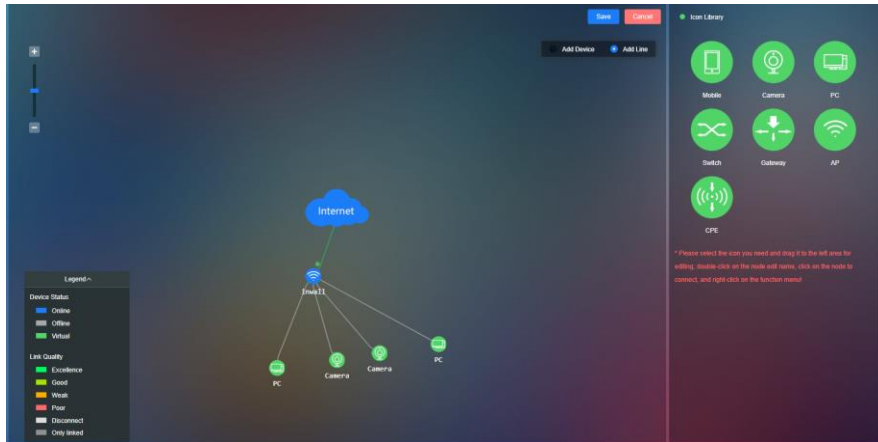
Cloud Captive Portal - advertising your own landing page

Overall, a Cloud Captive Portal can provide a simple, effective, and secure way to provide controlled access to public Wi-Fi networks.

### Auto Network Topology View

#### Discover devices at a glance

Auto Network Topology View, network administrators can see at a glance which devices are connected to the network, causing bottlenecks, or, down. Thus, they can quickly identify network problems and troubleshoot issues. The topology view can also help administrators plan and optimize the network, by identifying areas of congestion, redundancy, or inefficiency.



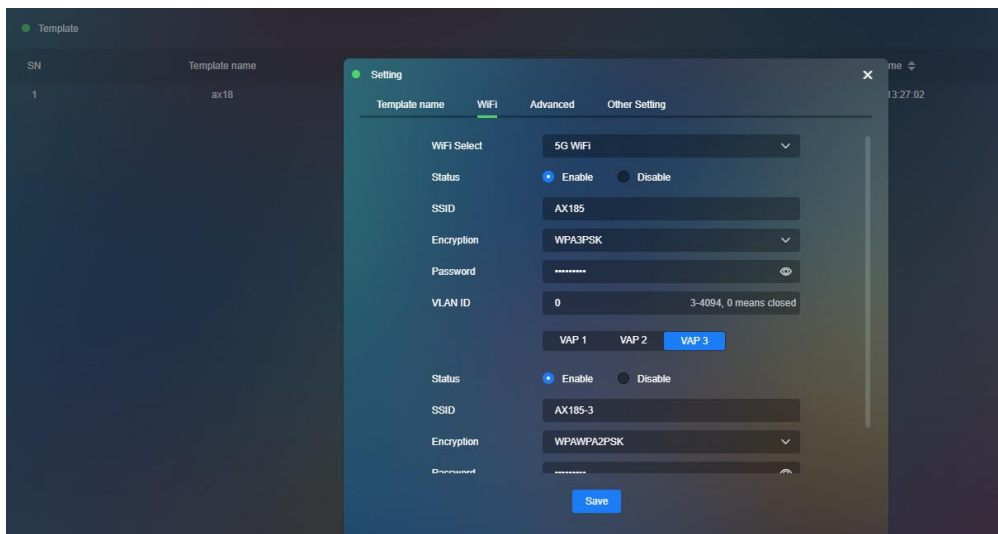
### Cloud AP Configure and deploy

#### streamline wireless network management

#### improve network performance and security

Using cloud-based solutions for access point configuration and deployment can offer several advantages over traditional on-premises methods. These solutions can enable remote management of access points, allowing IT teams to configure and maintain large wireless networks more efficiently. Additionally, the use of pre-configured templates can help standardize access point settings across the network, reducing the risk of errors or inconsistencies.

Overall, cloud-based access point configuration and deployment, along with the use of templates, can help organizations streamline their wireless network management processes and improve network performance and security.



Pre-Configure wireless template for multiple access point deploy

Model	AirCloud AirLive Cloud Base Controller
<p><b>Host</b></p> <ul style="list-style-type: none"> <li>• <b>Main Host:</b> Awz EC2 2xlarge</li> <li>• <b>Internet Connection:</b> 5000mbps</li> </ul> <p><b>Operation System</b></p> <ul style="list-style-type: none"> <li>• <b>OS:</b> ubuntu-focal-20.04-amd64-server</li> </ul> <p><b>Web Site Map</b></p> <ul style="list-style-type: none"> <li>• Login <ul style="list-style-type: none"> <li>Remember Account</li> <li>Forgot Password</li> <li>Register</li> <li>Agreement</li> </ul> </li> <li>• Home <ul style="list-style-type: none"> <li>Binding device</li> <li>Personal</li> <li>System info</li> <li>Logout</li> <li>Device statistics</li> <li>Latest access</li> <li>Configuration Log</li> <li>User activity</li> <li>Total</li> <li>Online</li> <li>Offline</li> <li>Inspection report</li> <li>Faulty</li> <li>Upgradeable</li> <li>Backup</li> <li>Timed Inspection</li> </ul> </li> <li>• Device <ul style="list-style-type: none"> <li>Project List</li> <li>Topology View</li> <li>Edit Topology Graph</li> <li>Reset Topology Graph</li> <li>Scan Device</li> <li>Full Screen</li> <li>List View</li> <li>Config <ul style="list-style-type: none"> <li>✓ Info <ul style="list-style-type: none"> <li>2G WIFI</li> <li>5G WIFI</li> <li>WIFI User</li> <li>Network</li> <li>User List</li> <li>Other Info</li> </ul> </li> </ul> </li> </ul> </li> </ul>	<ul style="list-style-type: none"> <li>✓ WIFI <ul style="list-style-type: none"> <li>2G WiFi</li> <li>5G WiFi</li> <li>Advanced</li> </ul> </li> <li>✓ WiFi Time Off <ul style="list-style-type: none"> <li>Enable/Disable</li> </ul> </li> <li>✓ Alarm Setting <ul style="list-style-type: none"> <li>Devices are frequently online and offline</li> <li>CPU usage</li> <li>Memory usage</li> <li>DHCP conflicts</li> <li>On/Off</li> <li>Email Push</li> <li>Notify user</li> </ul> </li> <li>✓ Device Log</li> <li>✓ Auth <ul style="list-style-type: none"> <li>2G WiFi</li> <li>5G WiFi</li> <li>Ethernet</li> <li>Portal</li> <li>Strategy</li> <li>Authentication Method</li> <li>Roaming Service</li> </ul> </li> <li>✓ Other Setting <ul style="list-style-type: none"> <li>Time Reboot</li> <li>Device Password</li> </ul> </li> <li>Application template</li> <li>Reboot</li> <li>Device Allocation</li> <li>Export</li> <li>Unbind</li> <li>• Project <ul style="list-style-type: none"> <li>Project List</li> <li>My Project <ul style="list-style-type: none"> <li>✓ Add</li> <li>✓ Delete</li> </ul> </li> <li>Project Info</li> </ul> </li> <li>• Maintenance <ul style="list-style-type: none"> <li>Upgrade <ul style="list-style-type: none"> <li>✓ Upload Firmware</li> <li>✓ Timed Upgrade</li> </ul> </li> <li>Log <ul style="list-style-type: none"> <li>✓ Configuration Log</li> <li>✓ Upgrade Log</li> </ul> </li> </ul> </li> </ul>

Model	AirCloud AirLive Cloud Base Controller
<ul style="list-style-type: none"> <li>• Maintenance               <ul style="list-style-type: none"> <li>Template                   <ul style="list-style-type: none"> <li>✓ Add                       <ul style="list-style-type: none"> <li>Template name</li> <li>2G WiFi</li> <li>5G WiFi</li> <li>Advanced</li> <li>Other Setting</li> <li>Time Reboot</li> <li>Device Password</li> </ul> </li> </ul> </li> </ul> </li> <li>• Authentication               <ul style="list-style-type: none"> <li>Portal                   <ul style="list-style-type: none"> <li>✓ Before Authentication                       <ul style="list-style-type: none"> <li>Mobile</li> <li>PC</li> <li>Display Type</li> <li>Title Name</li> <li>Banner</li> <li>Picture 1</li> <li>Picture 2</li> <li>Picture 3</li> <li>Guide Address</li> <li>Color</li> <li>Apply</li> </ul> </li> <li>Process Authentication                       <ul style="list-style-type: none"> <li>• Mobile</li> <li>• PC</li> <li>• Tips Picture</li> </ul> </li> <li>After Authentication                       <ul style="list-style-type: none"> <li>• Mobile</li> <li>• PC</li> <li>• Tips Picture</li> </ul> </li> <li>✓ Strategy                       <ul style="list-style-type: none"> <li>Strategy Set                           <ul style="list-style-type: none"> <li>Strategy Name</li> <li>Validity Authentication                               <ul style="list-style-type: none"> <li>• 1-7Days</li> <li>• Permanent</li> </ul> </li> <li>White List</li> <li>Black List</li> <li>IP</li> <li>MAC</li> </ul> </li> </ul> </li> </ul> </li> </ul> </li> </ul>	<ul style="list-style-type: none"> <li>• Authentication Methods</li> <li>• Authentication Configuration               <ul style="list-style-type: none"> <li>✓ No Auth</li> <li>✓ Member                   <ul style="list-style-type: none"> <li>Config</li> <li>Delete</li> <li>Batch Delete</li> <li>Add Member</li> <li>Import member</li> <li>Download</li> <li>Member Account</li> <li>Login Password</li> <li>Save</li> </ul> </li> </ul> </li> <li>• Authentication Details               <ul style="list-style-type: none"> <li>✓ Export authentication list</li> <li>✓ Details</li> </ul> </li> <li>• Account               <ul style="list-style-type: none"> <li>✓ Config                   <ul style="list-style-type: none"> <li>Account</li> <li>Nickname</li> <li>Mobile</li> <li>Email</li> <li>Admin</li> <li>Guest</li> <li>Status</li> <li>Binding Project</li> </ul> </li> <li>✓ Create Account</li> <li>✓ Reset Password</li> <li>✓ Delete Account</li> </ul> </li> </ul> <p><b>Language</b></p> <p>English</p> <p><b>AirLive AirCloud</b></p> <p>AirLive Cloud Base Controller</p>

